

François POMPON (1855-1933)

***PANTHÈRE NOIRE ears down
or «Panthère mouchetée, oreilles couchées.»[?]***

Black ink on carbon copy paper, with pencil

With reference mark, glued on paper

H : 47 cm, L : 66.5 cm

Drawing signed twice with cursive writing «Pompon» and

«F.Pompon» in the low right corner.

Circa 1927

Provenance :

Former Courty Collection.

Marked on the back «Exposition Rétrospective Pompon, Musée des
Beaux-Arts, 1964, Dijon, n° 236 from the catalogue»

Drawings by Pompon are rare, except some small sketches and preparatory documents (sometimes with measurements) from book notes approximately 8 cm and 14cm long.

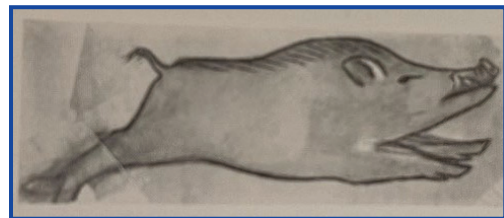
Then, our ink drawing *Panthère Noire oreilles couchées* is currently, with the *Sanglier* one in charcoal (1925) from the Pompon gift (fig. hereby), one of the most achieved ones.

It could be a study for a direct carve, perhaps a low relief, which has never been realized. Only one other relief of small dimensions in limestone has been begun in the Pompon's œuvre .

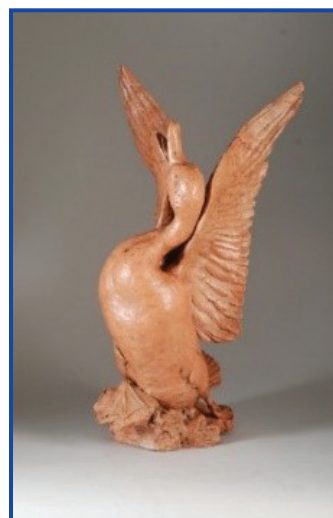
Perhaps Pompon wish to keep a trace from the profile of his bronze *Panthère noire* which was 27 cm high and 63 cm long², with hesitation between *Panthère mouchetée* and *Panthère noire* by the fur's treatment.

This drawing was included in the Pompon retrospective at the Fine Arts Museum in Dijon in 1964. It has belonged to the Edmond Courty Collection (1896-1972). This renowned and high prize considered collector was a businessman who has built the concrete Art Déco artists' studios at 23, rue Campagne première in Paris. Pompon lived and worked in this artist street after 1877 at the 3rd, where he was the neighbour of Modigliani, Giacometti, Kandinsky, Miro, Picasso, Foujita...

Courty could have purchased this drawing directly from his studio, which could be assessed by the fact that he was the owner of the *Canard appellant* (1884) (fig. hereby). This piece has never been exhibited during Pompon's lifetime, until we purchased it during one of the Courty's sales.



Sanglier, Pompon.



Canard appellant, Pompon.

236. PANTHÈRE NOIRE.
Étude au lavis.

M. COURTY.

Catalogue of the exhibition at the Fine Arts Museum in Dijon in 1964.

